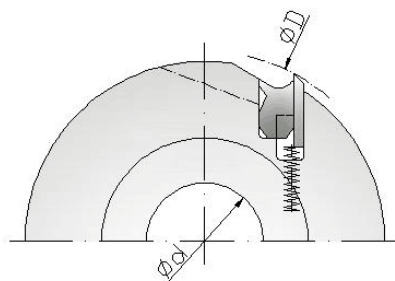
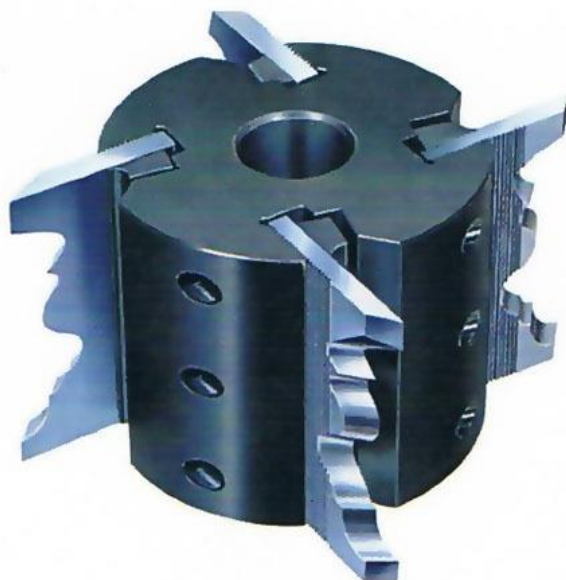


GŁOWICA RYFLOWANA

Adres URL: <https://mill-tech.pl/frezy-do-drewna/glowica-ryflowana/>

Zdjęcie profilowe i rysunek techniczny:



Parametry techniczne:

| D [mm] | B [mm] | d [mm] | n_{max} [min ⁻¹] | z |
|-----------|-----------|-----------|--------------------------------|---|
| 122 | 40 | 40 | 9000 | 4 |
| 122 | 60 | 40 | 9000 | 4 |
| 122 | 80 | 40 | 9000 | 4 |
| 122 | 100 | 40 | 9000 | 4 |
| 122 | 130 | 40 | 9000 | 4 |
| 122 | 150 | 40 | 9000 | 4 |
| 122 | 180 | 40 | 9000 | 4 |
| 122 | 230 | 40 | 9000 | 4 |
| 137 | 60 | 50 | 8000 | 4 |
| 137 | 80 | 50 | 8000 | 4 |
| 137 | 100 | 50 | 8000 | 4 |
| 137 | 130 | 50 | 8000 | 4 |
| 137 | 150 | 50 | 8000 | 4 |
| 137 | 180 | 50 | 8000 | 4 |

D – średnica zewnętrzna

B – szerokość głowicy

d – średnica otworu

n_{max} – obroty maksymalne

z – ilość zębów